

Power and Light Cord Reels | Series L 4000 / L 5000 / L 7000 / L 70000

Model with Cord	Cord Ending	Cord Specifications				Volts	Amps	Shipping Weight		Size Index #
		AWG	mm ²	# Cond	ft m			lbs	kg	
L 4035 163 1	*Incandescent	16	1.33	3	35 11	SJTOW	125	10	23 10	1
L 4050 163 1	*Incandescent	16	1.33	3	50 15	SJTOW	125	10	27 12	1
L 4050 A 163 5**	*Incandescent	16	1.33	3	50 15	SJEOW	125	13	28 13	1
L 5245 A 163 6X**	Fluorescent	16	1.33	3	45 14	SEOOW	125	0.13	39 18	2
L 4035 162 2	Fluorescent	16	1.33	2	35 11	SJTOW	125	0.3	25 11	1
L 4050 162 2	Fluorescent	16	1.33	2	50 15	SJTOW	125	0.3	26 12	1
L 4035 163 8	Fluorescent Light and Outlet	16	1.33	3	35 11	SJTO	125	10	25 11	1
L 4050 163 8	Fluorescent Light and Outlet	16	1.33	3	50 15	SJTO	125	10	27 12	1
L 4035 163 10	LED	16	1.33	3	35 11	SJTOW	125	13	26 12	1
L 4050 163 10	LED	16	1.33	3	50 15	SJTOW	125	13	28 13	1

For indoor non-weather tight applications only. *Incandescent bulb 75 watt max. All models UL listed at 125 Volt 60 HZ single phase. **Models equipped with automatic on/off switch that activates power. **NOTE:** Swing brackets should be used if cords are pulled at more than 45°, see page 49. Reference page 4 for guide arm positions.



L 4050 163 10

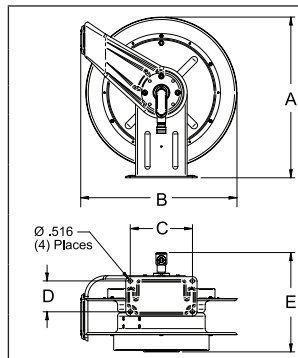


L 4050 162 2

- ✓ Compact for critical space requirements
- ✓ Durable abrasion and corrosion resistant baked-on powder coat finish
- ✓ All models supplied with cord are complete with a 4-5 foot pigtail and three-prong plug (except flying lead reels)
- ✓ Wall, ceiling or bench mount
- ✓ Adjustable cord stop
- ✓ Engineered for industrial use

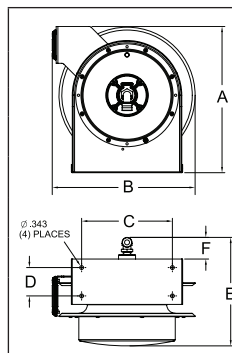
Cord Options

	#1 - Incandescent Light (100 watt max) <ul style="list-style-type: none"> Single receptacle tool tap Push-through switch, metal grounded guard
	#2 - Fluorescent Light (825 lumens) <ul style="list-style-type: none"> Durable shock absorbing lamp holder Shatter-resistant tube with switch
	#5 - Incandescent Light (100 watt max) <ul style="list-style-type: none"> Rubber handle with vinyl-coated cage w/o switch or receptacle Automatic on/off switch at reel guide arm Complies with NEC #511-3, f., portable lighting equipment; meets OSHA requirements
	#6 - Fluorescent Light <ul style="list-style-type: none"> Explosion proof 13 watt fluorescent hand lamp Automatic on/off switch at reel guide arm Suitable for Class 1, Div 1 group C and D locations Note: Reel is not explosion-proof.
	#8 - Fluorescent Light (825 lumens) <ul style="list-style-type: none"> 120 V - 10 amp receptacle in-line on lamp handle Scratch guard protects lamp cover
	#10 - LED Light (930 lumens) <ul style="list-style-type: none"> Two ultra high intensity 4-watt LEDs; single 3-watt end spot light Polycarbonate shatter-resistant light tube In-line tool tap, NEMA 5-15R configuration maximum 12 amp draw



Dimensions - Size Index

	5		6	
	in	mm	in	mm
A	20 ¹ / ₄	514	20 ¹ / ₄	514
B	19 ³ / ₄	502	19 ³ / ₄	502
C	7 ¹³ / ₁₆	198	7 ¹³ / ₁₆	198
D	3 ⁷ / ₈	98	3 ⁷ / ₈	98
E	11 ³ / ₄	298	12 ¹ / ₂	318



Dimensions - Size Index

	1		2		3		4	
	in	mm	in	mm	in	mm	in	mm
A	12 ⁷ / ₈	327	14 ³ / ₈	365	17 ⁵ / ₈	448	17 ⁵ / ₈	448
B	12 ⁵ / ₈	321	14 ¹ / ₄	362	16 ³ / ₄	425	16 ³ / ₄	425
C	8	203	9 ³ / ₄	248	9 ³ / ₄	248	9 ³ / ₄	248
D	2 ¹ / ₂	64	2 ¹ / ₂	64	2 ¹ / ₂	64	2 ¹ / ₂	64
E	9 ³ / ₈	239	10 ¹ / ₂	267	10 ¹ / ₂	267	12 ¹ / ₂	318
F	1 ³ / ₄	44	2 ¹ / ₈	54	2 ¹ / ₈	54	2 ¹ / ₈	54

Models listed with an icon can ship same day upon request when the order is received by 1:00 PM Eastern Time for quantities of 10 or fewer.

- Indiana Warehouse
- California Warehouse
- Indiana & California Warehouses
- Canadian Warehouse



Interactive Reel Catalog

Visit www.reelcraft.com/catalog for complete product specifications, available parts and accessories.

Prop 65: **WARNING:** Cancer and Reproductive Harm www.P65Warnings.ca.gov.

Customer Service: 1.855.634.9109
All Other Calls: 1.800.444.3134

