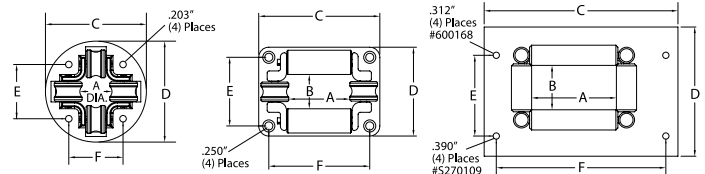


Roller Hose Guide Assemblies



Model	Accommodates	Weight lbs kg	Dimensions											
	Hose O.D.		A		B		C		D		E		F	
	in (mm)		in	mm	in	mm	in	mm	in	mm	in	mm	in	mm
HR1057	.603 (16) - .906 (23)	.25 .12	0.875	22.3	N/A	3.125	79.4	3.125	79.4	1.6875	42.9	1.6875	42.9	
HR1059	.250 (6.4) - .625 (15.9)	.25 .12	0.625	15.9	N/A	3.125	79.4	3.125	79.4	1.6875	42.9	1.6875	42.9	
HR1145	.603 (16) - .906 (23)	.34 .15	2	50.8	1 25.4	3.75	95.3	2.75	69.9	2.125	54.1	3.125	79.4	
S270109	.900 (23) - 2.00 (50.8)	5.39 2.44	5.25	133.4	2.375 60.4	12	305	8	204	5	127	10.5	267	
600168	.900 (23) - 1.38 (35)	1.75 .34	1.75	44.5	2.0625 27	5.125	130	5.125	130	4	102	4	102	

These four-way roller guide assemblies are for use with reels on cabinet door openings and for similar locations where sharp edges may cut or damage the hose. The four-way design permits pulling or retracting hose at any angle. Model S270109 has nylon rollers mounted on an 11 gauge steel frame with pre-drilled mounting holes.



Note: A hose bumper should be used with the four-way roller hose guide assemblies to prevent damage to rollers and nozzles.

Additional Accessories

<p>S600608</p> <p>600801</p> <p>600801-12</p>	340° Pivot Base Aligns reel to the direction of hose or cord run. May be mounted with reel upright or hanging. Weight 10 lbs (5 kg). Note: Use if hoses or cords are pulled at more than 45°. Refer to www.reelcraft.com/accessories for dimensional information.	For Reel Series RT / 4000 / 5000 / 5005 / 7000 / HD70000	Part # S600608
		80000 / D80000 / 30006	600801
		30012	600801-12
<p>600801-12</p>	330° Pivot Base Aligns reel to the direction of cord run. Use if cords are pulled at more than 45°.	L NM400	263109
	<p>600992</p> <p>600626</p>	Wall-Mounted Universal Swing Bracket Bracket will pivot approximately 180°. All steel construction with a durable baked on powder coat finish. Weight 6 lbs (3 kg). Note: Use if hoses or cords are pulled at more than 45°. Note: Not for overhead mounting. Refer to www.reelcraft.com/accessories for dimensional information.	For Reel Series RT
		4000 / 5000	600993
		RT / 4000 / 5000 / 5005 / 7000 / HD70000	600626
		80000 / D80000 / DP5000 / DP7000	600980
<p>600295</p> <p>600230</p>	Top Mounting Channels and Beam Clamps 600370 Top channel and beam clamps - for one reel 600295 Top channel and beam clamps - for two reels For mounting Series 7000 reels to an I-beam or overhead support. Mounting channels can be mounted end to end to mount three or more reels. To permit the mounting of Reelcraft Series RT, 4000, 5000, 5005 and electric cord reels on mounting channel, an adaptor assembly must be used (#600230).		
	600230 Adaptor Assembly Used with top channels and beam clamps only.		

Roller Guide Assemblies

<p>Three-way rollers</p>	<p>Four-way rollers (multi-position)</p>																																																								
Spools and blocks are chrome-plated to resist corrosion and abrasion. Rollers speed handling and reduce wear on hose. All painted parts are finished with durable abrasion resistant baked-on powder coat. Delrin bearing surfaces give a quiet operation with minimum wear and all features combine to give trouble-free maximum service life.																																																									
For the special UHMW composite rollers, add a "U" at the end of the part number. (Example: S600693-1U)																																																									
<table border="1"> <thead> <tr> <th>Hose Reel Spool Size</th> <th>Bottom Wind Roller bracket assembly model number</th> <th>Top Wind Roller bracket assembly model number</th> <th>Multi Position Roller bracket assembly model number</th> </tr> <tr> <th>in mm</th> <th></th> <th></th> <th></th> </tr> </thead> <tbody> <tr> <td colspan="4">Series 30000 - Four Way Rollers</td> </tr> <tr> <td>6 152</td> <td>S600693-1</td> <td>S600692-1</td> <td>S600533-1</td> </tr> <tr> <td>12 305</td> <td>S600693-2</td> <td>S600692-2</td> <td>S600533-2</td> </tr> <tr> <td>18 457</td> <td>S600693-3</td> <td>S600692-3</td> <td>S600533-3</td> </tr> <tr> <td>22 559</td> <td>S600693-4</td> <td>S600692-4</td> <td>S600533-4</td> </tr> <tr> <td>28 711</td> <td>S600693-5</td> <td>S600692-5</td> <td>S600533-5</td> </tr> <tr> <td colspan="4">Series 30000 - Three Way Rollers</td> </tr> <tr> <td>6 152</td> <td>S602132-1</td> <td>S602133-1</td> <td></td> </tr> <tr> <td>12 305</td> <td>S602132-2</td> <td>S602133-2</td> <td></td> </tr> <tr> <td>18 457</td> <td>S602132-3</td> <td>S602133-3</td> <td></td> </tr> <tr> <td>22 559</td> <td>S602132-4</td> <td>S602133-4</td> <td></td> </tr> <tr> <td>28 711</td> <td>S602132-5</td> <td>S602133-5</td> <td></td> </tr> </tbody> </table>	Hose Reel Spool Size	Bottom Wind Roller bracket assembly model number	Top Wind Roller bracket assembly model number	Multi Position Roller bracket assembly model number	in mm				Series 30000 - Four Way Rollers				6 152	S600693-1	S600692-1	S600533-1	12 305	S600693-2	S600692-2	S600533-2	18 457	S600693-3	S600692-3	S600533-3	22 559	S600693-4	S600692-4	S600533-4	28 711	S600693-5	S600692-5	S600533-5	Series 30000 - Three Way Rollers				6 152	S602132-1	S602133-1		12 305	S602132-2	S602133-2		18 457	S602132-3	S602133-3		22 559	S602132-4	S602133-4		28 711	S602132-5	S602133-5		
Hose Reel Spool Size	Bottom Wind Roller bracket assembly model number	Top Wind Roller bracket assembly model number	Multi Position Roller bracket assembly model number																																																						
in mm																																																									
Series 30000 - Four Way Rollers																																																									
6 152	S600693-1	S600692-1	S600533-1																																																						
12 305	S600693-2	S600692-2	S600533-2																																																						
18 457	S600693-3	S600692-3	S600533-3																																																						
22 559	S600693-4	S600692-4	S600533-4																																																						
28 711	S600693-5	S600692-5	S600533-5																																																						
Series 30000 - Three Way Rollers																																																									
6 152	S602132-1	S602133-1																																																							
12 305	S602132-2	S602133-2																																																							
18 457	S602132-3	S602133-3																																																							
22 559	S602132-4	S602133-4																																																							
28 711	S602132-5	S602133-5																																																							
Bottom wind and top wind may be used with all models except bevel crank. Multi position may not be used on models with a chain guard or Series 37000 reels.																																																									

Prop 65: ⚠ WARNING:
 Cancer and Reproductive Harm - www.P65Warnings.ca.gov.