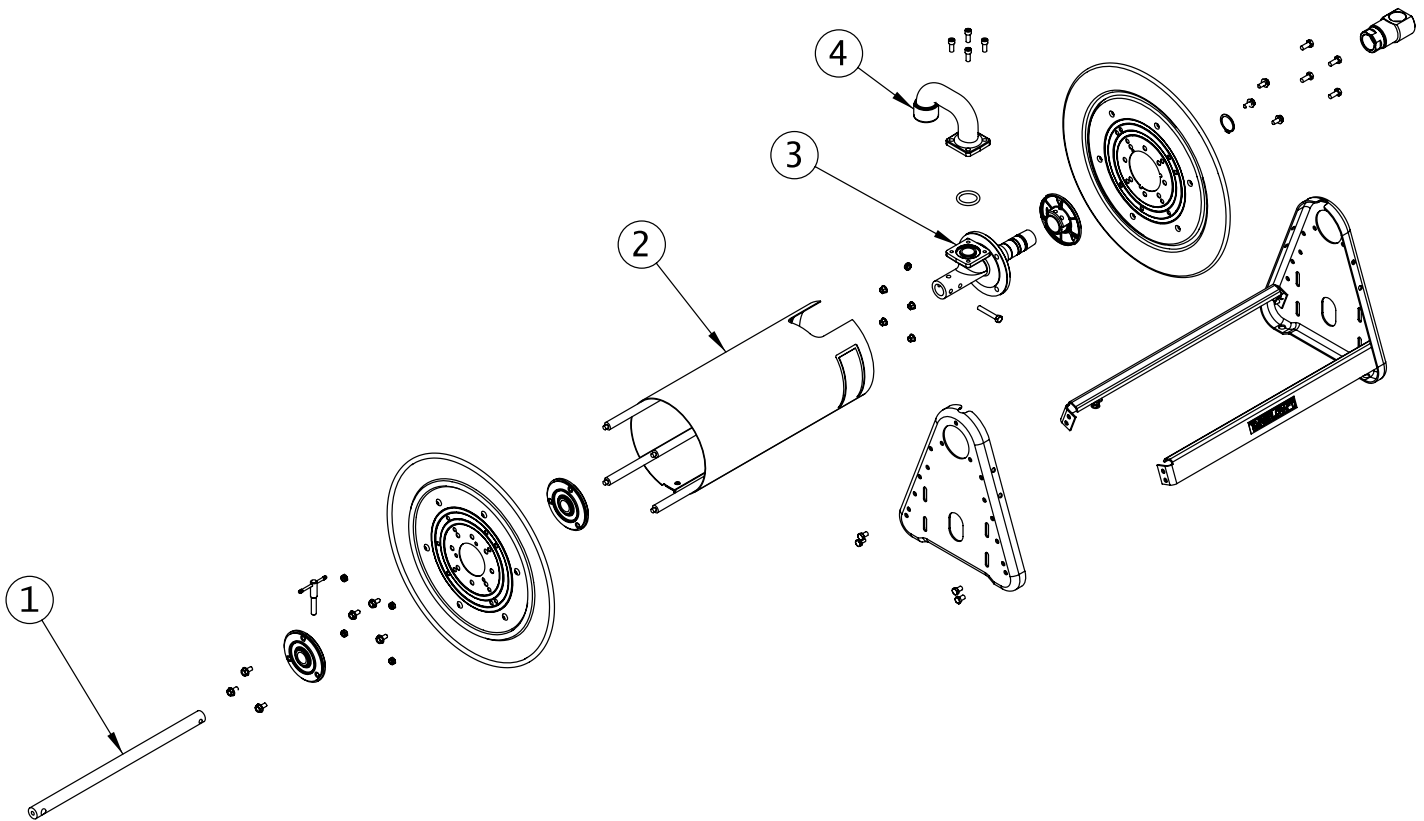


Tech Bulletin

Series BH/CH/EH37000 Hose Reels



Series BH/CH/EH37000

1. Solid shaft connects to spindle to form a rigid connection from side to side.
2. Slotted spool provides a smooth hose transition.
3. Heavy duty spindle - 300 PSI for low pressure applications, 3000 PSI for medium pressure applications.
4. The gooseneck will accommodate 1" I.D. hose.

The design eliminates possible bearing misalignment due to heavy vibration in mobile applications by replacing the self-aligning bearing in favor of a static oil lite bearing. The 1" solid main shaft machined from solid stock and fully wrapped spool add significant rigidity to the design.

Form # TB0040 Rev: 11/2013